



dental



vision



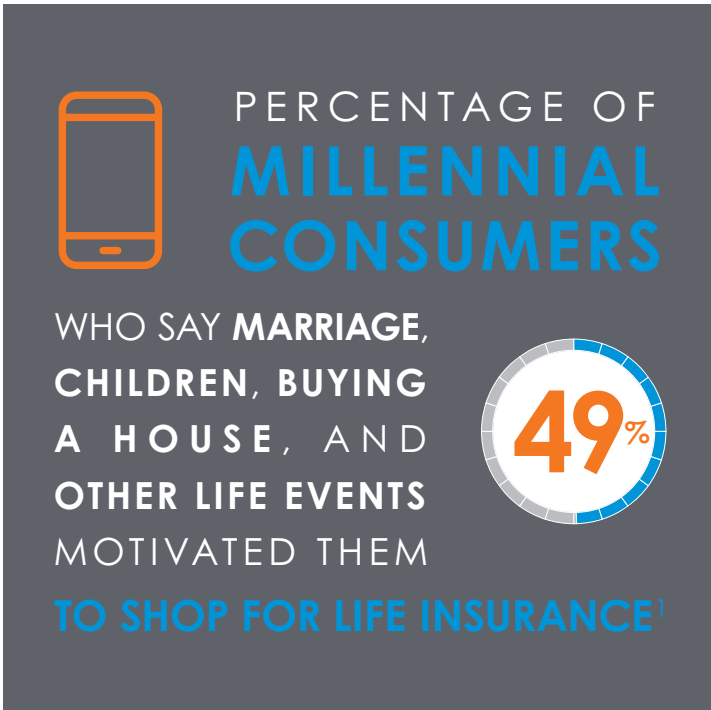
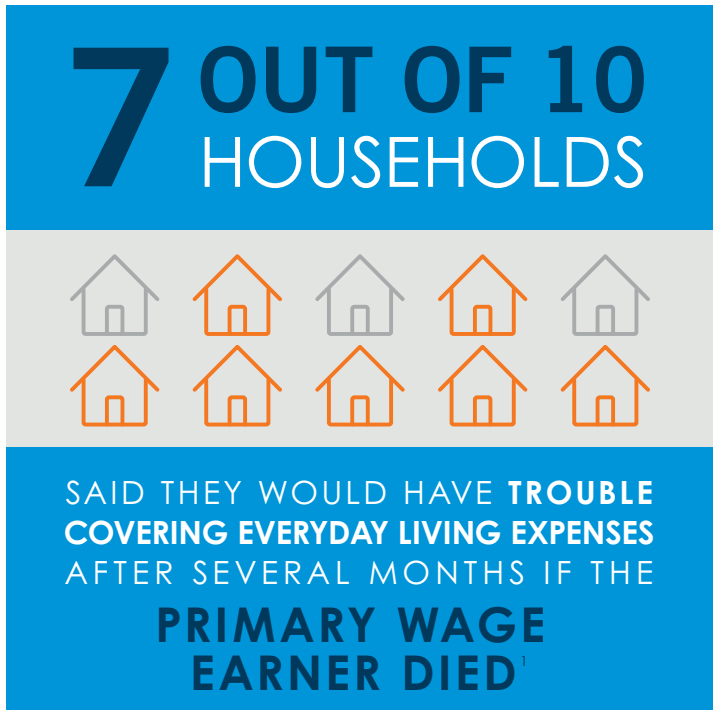
life

# Help when you need it most

## The unexpected death of a spouse or other family wage earner is tough to think about

But the comfort of having extra financial security can make dealing with that tragedy a bit easier. Life insurance can help cover the immediate expenses associated with an untimely death, as well as future financial needs, such as debt, mortgage or rent, taxes, car payments, and educational, medical, and childcare expenses.


Talk to your employer or broker about Blue Shield life insurance available to you.\*





\* Life insurance underwritten by Blue Shield of California Life & Health Insurance Company.

Life insurance covers debts of many kinds


**\$1,378** AVERAGE MONTHLY  
COST OF **CHILD CARE**  
IN MAJOR CALIFORNIA CITIES<sup>2</sup>



 AVERAGE REVOLVING  
**\$6,929**  
CREDIT CARD DEBT FOR FAMILIES IN 2018<sup>3</sup>

 IN STATE **\$21,370**

ROOM AND BOARD, TUITION, AND FEES  
– AT A –  
**FOUR-YEAR COLLEGE**  
IN 2018-2019<sup>4</sup>

 OUT OF STATE **\$37,430**

**\$8,755** THE MEDIAN 

COST OF A **FUNERAL IN THE U.S.**<sup>5</sup>

1 Facts About Life 2016, LIMRA.  
2 usa.childcareaware.org, 2018 data.  
3 "2018 American Household Credit Card Debt Study," Nerdwallet.com.  
4 "Trends in College Pricing 2018," <https://Trends.collegeboard.org>.  
5 Trends and Statistics, National Funeral Directors Association, 2017.